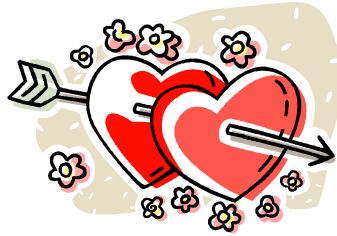


# Chamber / Tourism News

Fulton County – Seeing is Believing!

February 2006



## Chamber Membership Meeting

The Chamber/Tourism Membership Meeting will be held at The American Legion, in McConnellsburg From 12:30 PM to 1:30 PM, Wednesday, February 15<sup>th</sup>. **DON'T FORGET, YOUR MEMBERSHIP HAS ALREADY PAID FOR ONE PERSON FROM YOUR ORGANIZATION TO EAT!**

## Letter from Kathy & Stacey

Hello Fellow Chamber and Tourism Members!

Our new year seems to be off to a great start. We had a wonderful turnout for our first membership luncheon meeting in January. We hope everyone who was able to attend enjoyed their mini message. We discussed upcoming events and heard from a few local businesses and service organizations about happenings they have planned.

We have a Basket Bingo fundraiser planned for Sunday, March 12th, at the McConnellsburg Firehall. The doors will open at 12:30. We need sponsors for the baskets that will be given to the winners. Please contact Kathy Fester, 717.485.9100, if you would like the opportunity to advertise your business by having your name announced during the game being played that the winner will get the basket your business sponsored. Also, a list of the baskets and their sponsors will be given to everyone playing. Come out and join us for an afternoon of fun and mingle with customers, friends, family, and new potential customers. Tickets will be for sale in advance at many local businesses and they will be able to be purchased at the door on the day of the event.

The Chamber/Tourism Office is in need of advertising materials from businesses and organizations to have available for visitors to the area and for putting in our information bags that will be handed out at various events and to be put in local businesses offices. What a great way to get your name out there to be recognized as a place for people to go to that need what you have to offer!

Throughout the year, we will be forming committees to help organize events. Please let Anita know at the office if you would like to be contacted about serving on a committee. She can be reached at 717.485.4064. Thank you in advance for your interest in helping to promote Fulton County and for your valuable time.

Looking forward to seeing you at the February Membership Meeting on the 15th. Please bring a business card to use to be entered in a drawing for a "SWEET" treat.

Sincerely,  
Kathy and Stacey

## Business Spotlight

### First National Bank of Mercersburg



**Robert J. Fignar, CFP**, Senior Vice President of The First National Bank of Mercersburg, was recently named 2005 Dual Investment Representative of the Year in the Financial Institution Division of Talbot Financial Network. The award is given annually to an Investment Representative who demonstrates outstanding achievement in sales, service and program growth.

As part of the executive management team of the Bank, Bob has operational and management roles, as well as Investment Representative responsibilities. He is the investment program manager, and is responsible for licensed branch employees that are located at several of the Bank's branch offices. The Bank's investment program was awarded Talbot Financial Network's Retail Investment Program of the Year Award in 2003.

Financial Network Investment Corporation, member SIPC, the broker-dealer of choice for Talbot Financial Network, was founded in 1983, and is one of the leading full-service broker/dealers in the United States, with approximately 3,000 investment professionals across the country serving a diverse client base. Financial Network is part of ING Advisors Network.

Bob also serves as Chairman of Community Bankers Insurance Agency, LLC, a property and casualty insurance agency, of which the Bank is an equity-owner. He can be reached at 717-328-3121.



## **EAC . . . Exciting News for Fulton County**

Recently the members of the Business Services Team at the Fulton County CareerLink office have been focusing on employer services and methods to increase and improve those services. Employer networking is a valuable tool to improve individual businesses as well as foster positive growth and action in the county.

An Employer Advisory Council is one way to facilitate employer networking. The general life axiom, “use your resources”, most definitely applies to an EAC. Through this organization employers can share ideas with other businesses and adapt ideas specifically for their individual businesses. As a group they can decide what is important to the labor market of Fulton County. The council can keep up with changes in employment trends. As interest arises members can suggest seminars and/or workshops and secure knowledgeable speakers (often gratis) to present timely information. Business related issues such as job services, employment tax, disability insurance, unemployment insurance, equal employment opportunity, personnel administration and countless other topics could be addressed. The discretion of the council would determine priorities and direction that would be pursued.

The CareerLink office would support the work of the EAC by providing resources through our partners from the Office of Vocational Rehabilitation, Veteran Affairs Office and the Department of Public Welfare. We can also provide information on recruiting, interviewing, testing, placement services and job posting training on the PA CareerLink website.

Membership in the EAC would be open to any business regardless of size. Suggested members would be business owners, corporate managers, human resource managers, office managers, CPAs, CEOs and treasurers.

We (the CareerLink Business Services Team) want to hear from you. Perhaps you have gotten an email or letter. If so, please respond as to your interest in establishing a Fulton County EAC. Or, if up to this point you have not heard from us, please email, call or send us your name, title, company name, address phone number, fax and email address. We are preparing to host an Employer Breakfast to organize an EAC. If you are interested and get your information to us, we would like to invite you to the breakfast. We look forward to hearing from you. When we have the breakfast scheduled, you will hear from us.

Email: [fcbusinessteam@yahoo.com](mailto:fcbusinessteam@yahoo.com)

or

Mail to: Business Services Team  
Fulton County CareerLink  
116 West Market Street  
McConnellsburg, PA 17233

or

Call: 717-485-5131

**Article contributed by: Sandra Perry, Business Services Team, PA CareerLink, Fulton County**

**FREE WORKSHOP!** YOUR

# ATTITUDE IS SHOWING!



**This is a unique program that revolves around what motivates us. It is designed to help management teams work together. Conflict can happen even though we are pulling towards the same goal; the problem is that we are motivated to act this way by different personal "values." This workshop will help us understand why.**

**Attendees will gain flexibility in being able to see life from different viewpoints. You will gain personal and professional insights about yourself and others. Possessing these insights can help you improve and advance in your present position, or help you set your sights on your next career move!**

**People who may benefit from this workshop:**

- **Job seekers**
- **Human Resource Directors**
- **Managers**
- **Professionals in business development or sales**
- **Company presidents, Owners, and Management teams**
- **Marketing people**

*For more information, contact*

**PA CareerLink Fulton County**

**116 West Market Street**

**Suite 101**

**McConnellsburg, PA 17233**

**(717)485-5131**

**FAX: (717)485-9595**

**TTY (Deaf and Hard of Hearing):**

**(717)485-3970**

**E-mail:**

**fultoncareerlink@yahoo.com**

**Auxiliary aids and services are available upon request to individuals with disabilities.**

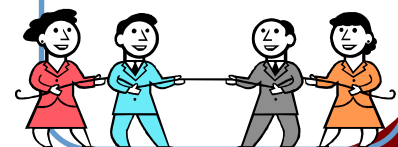
**Equal Opportunity Employer/Program**

## WHEN?

**Thursday,  
MARCH 16,  
2006  
9:00am-  
3:30pm**

## WHERE?

**FULTON  
THEATER**  
located on 2nd  
Street in  
McConnellsburg  
behind the main  
office of The Fulton  
County National  
Bank & Trust Co.





# **Free Interactive Training Opportunity!**

**Mental Health Recovery in the Community**

**and**

**The Certified Peer Specialist Service**

**February 24, 2006**

**Church of the Brethren-260 South Fourth Street, Chbg.**

**R.S.V.P. to Jan Trimmer 264-5387 or [jtrimmer@co.franklin.pa.us](mailto:jtrimmer@co.franklin.pa.us)**

**by February 15, 2006**

## **Agenda**

**9:30**

### **Welcome**

Opening Remarks and Introductions

*Kellie Wayda-OMHSAS*

**9:45**

### **PA Recovery Culture**

Principles of Recovery and the importance of community integration

*Matthew Federici- The Institute*

**10:05**

### **Power vs. Force/Working in Partnership**

An interactive presentation

New Approaches to Service Delivery-the focus will be support, partnerships and engagement strategies

*Dr. Scott Heller-OMHSAS and Gina Calhoun-The Institute*

**10:50**

### **Break**

**11:00**

### **County Call to Action**

Will discuss the steps and guidelines for the implementation of Certified Peer Specialist services

*Jan Trimmer and Jim Gilbert-Franklin Fulton County MH/MR*

**11:20**

### **Overview of an Existing Peer Specialist Service**

#### **Montgomery County**

Discussion of the services already implemented in Montgomery County

*Pam Howard-Director/Coordinator and Staff Supervisor*

**12:15**

### **Lunch**

**1:15**

### **The Certified Peer Specialist Service**

County specific discussion about Certified Peer Specialist Services

The roles of the CPS/Provider/Supervisor

*Betsy Kidwell and Gina Calhoun-The Institute*

**2:15**

### **Break**

**2:30**

### **Questions and Answers**

\*\*\*\*\*

**Sponsored by: The Institute for Recovery and Community  
Integration and OMHSAS**

Fulton County Chamber of Commerce & Tourism  
P.O. Box 141  
536 East Poplar Street  
McConnellsburg, PA 17233

**Chamber - Tourism Office / Visitor Center Hours**

Monday – Friday (9:00 a.m. to 4:30 p.m.)

Lunch (12:00 p.m. to 12:30 p.m.)

(717) 485-4064

[www.fultoncountypa.com](http://www.fultoncountypa.com)  
[fultoncountypa@earthlink.net](mailto:fultoncountypa@earthlink.net)

Excluding Major Holidays

**2005 Chamber of Commerce & Tourism Officers**

President . . . . . Kathy Fester  
Vice President . . . . . Stacey Bell  
Treasurer . . . . . Seleen Shimer  
Past President . . . . . Brenda Gordon  
Director of Events & Marketing . . . Theresa Bricker  
Administrative Assistant . . . Anita Mellott

**Chamber of Commerce & Tourism Board Members**

Julia E. Dovey – Fulton County Partnership  
Bobby Snyder – Snyder Insurance Agency  
Kendra McQuade – Primitive Corner  
Seleen Shimer – Fulton County Conservation District  
Loy Garber – JLG Industries  
Cheryl Morton – Morton's Attic  
Joni Park – Park's Texaco  
Gerri Ramsey – Community Bankers Insurance Agency  
Stacey Bell – Peck Insurance Agency, Inc.  
Clyde Bookheimer  
Ellis Yingling – Fulton County Commissioner  
Mark Washabaugh – Professional Uniforms & Advertising  
Howard Tomlinson – Mellott Wood Preserving  
Kathy Fester – Green Leaf Gifts & Things  
Mary Kay Seville – Fulton County Planning Commission  
John Shook – Fulton Antiques